



## NOTICE OF RACE

### De IJspiegel TROPHY series 2017 - 2018

ORC and ORC TwoHanded - IRC - One-design Classes

### Organised by: Jachtclub Scheveningen

Hellingweg 98, 2583 WH The Hague - E-mail: [info@ijspegeltrophy.nl](mailto:info@ijspegeltrophy.nl)

Tel: harbourmaster 031 653293137 - harbourmanager 0031 703520017

2017: 15 and 29 October - 12 and 26 November - 10 December (spare date: 17 December)

2018: 28 January - 11 and 25 February – 11, 24 and 25 March / 1 April Spring Team Race

---

## 1 RULES

- 1.1 The series will be governed by the rules as defined in *The Racing Rules of Sailing*.
- 1.2 The series is classified under WORLD SAILING Offshore Special Regulations (OSR) 2016 - 2017 category 4 monohulls.
- 1.3 The first sentence of IRC Rule 22.4.2 is deleted and replaced by "The maximum number of crew that may sail aboard a boat shall be the crew number printed on her certificate. This crew number may be exceeded as long as the total crew weight does not exceed 85 kg multiplied by the Crew Number printed on the boat's certificate.
- 1.4 Automatic or wind-vane steering is permitted for the TwoHanded class. This changes RRS 52
- 1.5 A trysail and heavy weather jib are not required to be on board during the series. This changes OSR 4.26.4.
- 1.6 It is not required to keep mattresses for the berths and settees on board during the races. This changes IMS Accommodation Requirements Appendix 1 part 2, 205 and 206 ORC Rating Systems 201.3.
- 1.7 Coaching support will be provided on behalf of the OA with post-race debriefing and on-the-water advice during racing. This changes RRS 41 – Outside Help
- 1.8 Boats shall fly from their backstay when racing the numeral pennant of their group.
- 1.9 Every person on board who has its domicile in the Netherlands shall have the required license. Event licenses can be obtained by completing the appropriate form on <http://www.jachtclubscheveningen.com/ijspegel/wedstrijd-bepalingen>
- 1.10 When there is a conflict between languages the original text will take precedence.

## 2 ADVERTISING

- 2.1 Boats may be required to display advertising chosen and supplied by the organizing authority.

## 3 ENTRY AND CLASSES

The series is open to boats of the ORC, IRC, ORC Two-Handed and one-design Classes. For dual scoring boats shall comply with both certificates.

Boats will be allocated to groups based upon their expected performance and speed potential and upon the number of entries. All boats in the TwoHanded class will be allocated to one separate group. The allocation to groups will be posted if possible on [www.ijspegeltrophy.nl](http://www.ijspegeltrophy.nl) but in any case on the first racing day in accordance with SI 3.1. The Race committee may allocate a boat to another group prior to her valid second racing day, based upon the criteria in SI 6.1. A boat may request the Race committee in writing to be allocated to another group based upon these same criteria prior to her second valid racing day.

A valid racing day for a boat is a racing day on which at least one score is not DNC or DNS

Any decision by the race committee in connection with the allocation of boats to groups will not be ground for redress. This changes RRS 62.1a.

- 3.1 Eligible boats may enter with the organising authority by completing the entry form on <http://www.jachtclubscheveningen.com/ijspegel/inschrijven-ijspegel> and paying the entry fee as explained in NOR 4.1.
- 3.2 No alteration in a boat's TCC, GPH or TCF will be permitted after 5 working days before its first race, except as result of a rating protest or to correct Rating Office errors.
- 3.3 Each participant shall submit before the first race for the IJspiegel TROPHY at the regatta office at the first racing day, following :
  1. A copy of the insurance policy showing adequate third party liability insurance with a minimum of €1.500.000 per event or the equivalent, including coverage for sailing at The North Sea;
  2. Crewlist using the official model on <http://www.jachtclubscheveningen.com/ijspegel/wedstrijd-bepalingen>

## 4 FEES

- 4.1 The series entry fee is €310. Participants without a fixed berth in Scheveningen pay €250 for berthing during the full period of the IJspiegel Trophy. See <http://www.jachtclubscheveningen.com/ijspegel/inschrijven-ijspegel> for details. Jachtclub Scheveningen will send an invoice which should be paid within 14 days from the invoice date.

## 5 SPARE

## 6 SCHEDULE

- 6.1 Boats shall register at the race office each racing day between 09.00 and 09.45 hours.
- 6.2 The scheduled dates of racing are:
- 6.3 **2017:** 15 and 29 October - 12 and 26 November - 10 December (spare date: 17 December)  
**2018:** 28 January - 11 and 25 February – 11, 24 and 25 March  
The races on 11 December are also scored separately as the "Midwinter races" for the Albatros Cup.  
The races on 25 and 26 March are also scored separately as "Atoom Cup" with special prizes.
- 6.4 The scheduled time of the warning signal for the first race each day is 11.25 hours.
- 6.5 Three races are scheduled for each day with the exception that for the TwoHanded Class 1 race is scheduled for each day (Course type II)
- 6.6 No warning signal will be made after 14:45
- 6.7 All boats, that on a racing day at 16.00 hours have not finished, will be scored DNF without a hearing. This changes rules 35, A4 and A5.
- 6.8 On Sunday 1 April 2018 the Spring Team Race for the Meeuwisse Baggercup is sailed. The Spring Team Race is part of the IJspiegel Trophy as a separate event, and is not included in the overall scoring of the IJspiegel Trophy Series.

## 7 MEASUREMENTS

- 7.1 The race committee may check a boat before or after a race on compliance with OSR 4.

## 8 SAILING INSTRUCTIONS

The sailing instructions will be available on <http://www.jachtclubscheveningen.com/ijspegel/wedstrijd-bepalingen> from 1 October 2017. The regatta office will only have a restricted number of copies for reference purposes. Please make sure to print your own copies from our web site.

## 9 VENUE

9.1 Prior to the race(s) the race office will be located in clubhouse 't Spuigat, Kranenburgweg 160, Scheveningen. The office will open from 09:00 hours.

After the race(s) the race office will be located in the harbour office at Hellingweg 98.

9.2 The regatta harbor is the marina Jachtclub Scheveningen, Hellingweg, Scheveningen.

9.3 Attachment A shows the location of the racing areas.

## 10 THE COURSES

The courses will be upwind downwind courses (course type I) and for the two-handed class coastal courses around inflatable marks and/or hydrographical buoys (course type II). When the circumstances do not permit the laying of inflatable marks, all classes may sail a coastal race.

The course descriptions will be published in the sailing instructions.

## 11 PENALTY SYSTEM

11.1 RRS 44.1 is changed so that the Two-Turns Penalty is replaced by the One-Turn Penalty.

11.2 Appendix T (Arbitration) RRS applies amended so that the Arbitrator may form part of any subsequent protest committee.

## 12 HANDICAP SYSTEMS AND SCORING

12.1 The finishing order of boats in handicap classes is the finishing order on corrected time.

The corrected time for IRC will be calculated according to the TCC.

The corrected time for ORC (except TwoHanded) will be calculated according to the Time on Time Triple Number System Inshore handicap.

ORC TwoHanded will be scored with the Time On Time Offshore (single number) handicap shown in the Short-Handed ORC or ORCi Certificate or the Time On Time Double Handed Offshore single number Handicap shown in the full crew ORC certificate, whichever is applicable.

The wind range to be used for scoring will be signaled on the race committee signal vessel at the warning signal:

L = wind range low (less or equal 9 knots)

M = wind range medium (between 9 & 14 knots)

H = wind range high (greater or equal 14 knots)

12.2 The race committee may change the wind range to be used in case of significant change in the weather conditions. Any decision by the race committee in connection with the application of the Triple Number System will not be ground for redress This changes RRS 62.1a.

12.3 Series scores all

In the calculation of overall IJspegelTrophy series scores new entries during the series do not affect the scores on earlier dates. This changes RRS A2.2.

12.4 Series scores except TwoHanded

33 races are scheduled. Four races are required to be completed to constitute a series.

The number of worst race scores that will be excluded from the series score is 25% of the number of races that have been completed rounded down to a whole number. A boats series score will be the total of her race scores excluding her worst race scores.

#### 12.5 Series scores TwoHanded

11 races are scheduled. Two races are required to be completed to constitute a series.

The number of worst race scores that will be excluded from the series score is 35% of the number of races that have been completed rounded down to a whole number. A boats series score will be the total of her race scores excluding her worst race scores.

#### 12.6 Combined ORC – IRC scores

A combined ORC - IRC score as envisaged for the 2018 ORC/IRC world Championship will also be calculated when the Organising Authority of the Championship has and published the method that will be used and if that method is suitable for the IJspegelTrophy series.

### 13 SPARE

### 14 SPARE

### 15 SPARE

### 16 SPARE

## 17 RADIO COMMUNICATION

The Starting/Finishing vessel will use VHF channel 72. The content of information given over the VHF channel is service to the competitors and will be no ground for redress. This changes RRS62. This does not apply to the course descriptions of course type II when solely given on VHF.

## 18 PRIZES

Weekend and series prizes will be awarded per group as follows:

|                           |          |
|---------------------------|----------|
| Till 6 boats entered:     | 1 prize  |
| 7-9 boats entered:        | 2 prizes |
| 10 or more boats entered: | 3 prizes |

The price giving ceremony will be at the clubhouse 't Spuigat, Kranenburgweg160, Scheveningen as soon as possible after the races.

## 19 RIGHTS TO USE NAME and LIKENESS

By participating in the IJspegel TROPHY series, a competitor automatically grants the organising authority and the sponsors, the right to, in perpetuity, make, use and show, from time to time and at their discretion, any (still) motion pictures, live, taped or filmed television and other reproductions of the competitor and its material, during and after the series without any compensation.

## 20 LIABILITY and INSURANCE

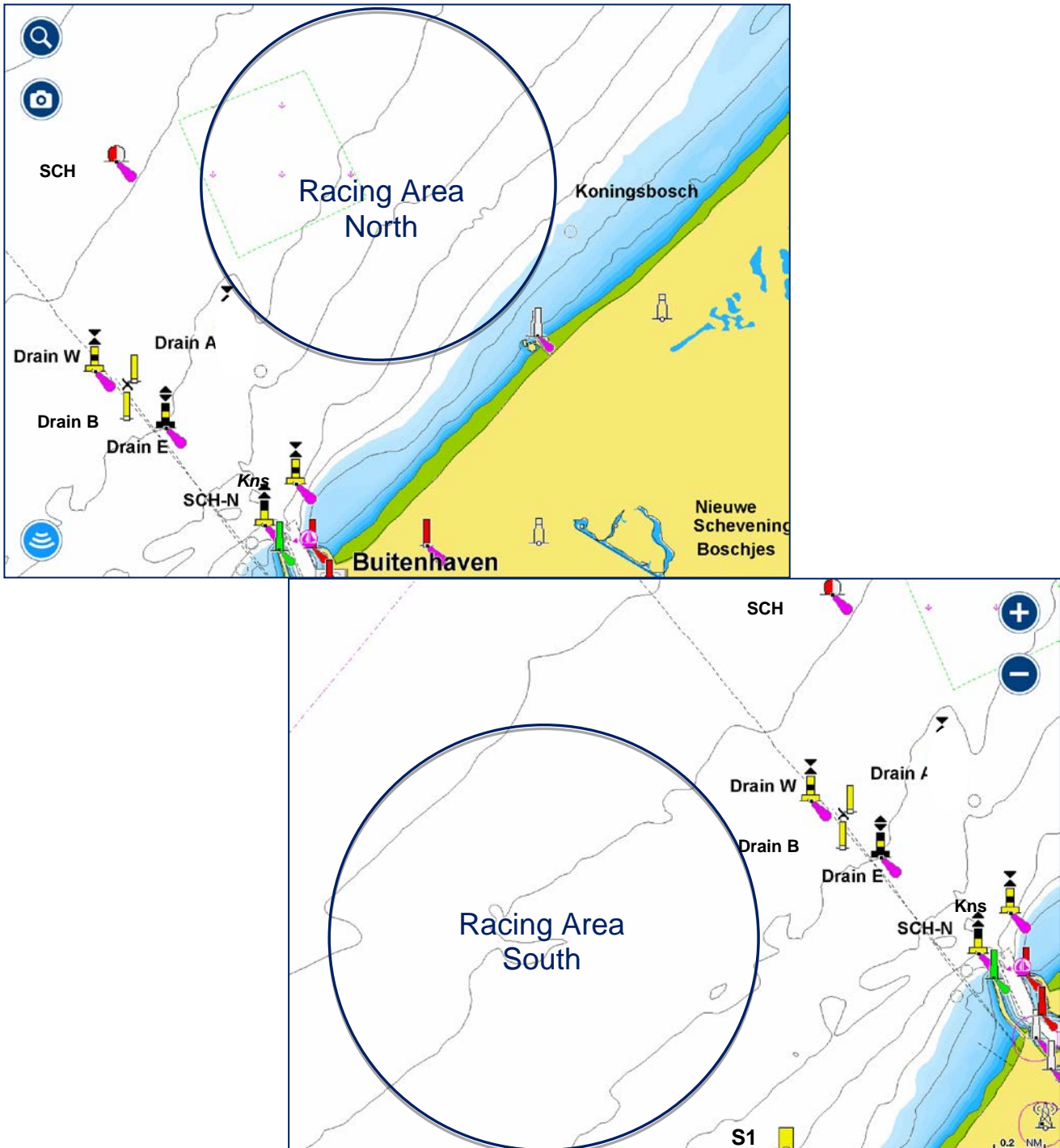
Competitors participate the series entirely at their own risk. See rule 4 of the racing rules, decision to race. Jachtclub Scheveningen, the sponsors, the committees, the insurers and any other party and/or persons involved in the organisation of the series will accept no liability whatsoever for any personal or material damage (including but not limited to death, injury, consequential damages, etc.) sustained prior to, during or after the series. Each participating competitor shall arrange for adequate third party liability insurance with a minimum of € 1.500.000 per event or the equivalent in the currency of the country of registration of the participant, including coverage for sailing at The North Sea.

## 21 FURTHER INFORMATION

For further information, please contact the organising committee through [info@ijspegeltrophy.nl](mailto:info@ijspegeltrophy.nl) and on <http://www.ijspegeltrophy.nl/>.

**LOCATION OF THE RACING AREAS**

**Possible racing areas for course type I (windward- leeward courses)**



**Racing area for coastal courses (course type II)**

The racing area for the coastal races is the coastal area off Scheveningen until approximately 6 nautical miles from the harbour entrance.